

# DURASET CONCRETE SLEEPERS

WORLD CLASS MINES DO IT THE DURATRACK WAY

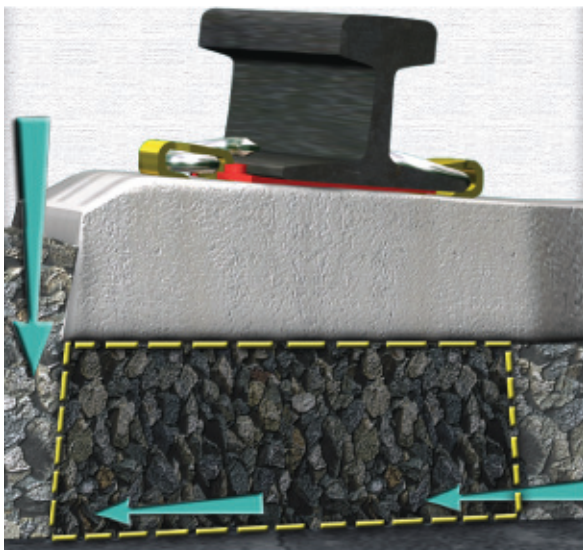
## CRITICAL INSTALLATION PROCEDURES 1



### TRACK PANEL

### THE STRONG FOUNDATION

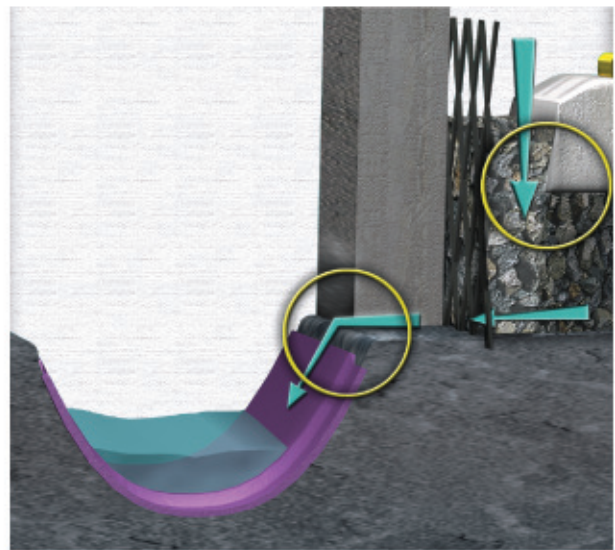
- Compact footwall sloping 1:20 towards the drain
- Use graded, washed ballast 37.5mm to 53mm in size



### BALLAST

### THE RESILIENT SUPPORT

- Only tamp directly beneath the rail seats, leaving loose ballast underneath the middle of the sleeper
- Ballast around heads of sleepers
- Ballast up to 30mm below the flange of the rail.



### WATER

### PUBLIC ENEMY NUMBER 1

- Use FloLok drains to keep water away from the track panel
- Top of drain sections must be below the elevation of the sleeper base.



**DURASET**

THE AVENG GROUP