

THREAD BAR 600 - DYNO BAR



Manufactured from high strength input steel, the Dyno Bar is cold thread rolled into a continuously threaded bar over its entire length.

APPLICATIONS

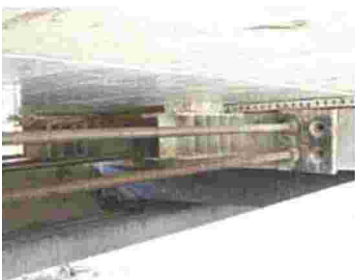
The Dyno Bar system is ideally suited to the construction industry where greater forces are encountered, and typical applications are described as follows:

- Rock bolts
- Ground anchors
- Micro piling
- Upliftment anchors
- Jacking rods
- Foundation bolts
- Mining construction
- Tunnelling

NOTABLE PROJECTS

The Dyno system has proven itself competent on major civil projects in Southern Africa namely:

- Chapman's Peak - reparation
- Lesotho Highland Water Project
- Zambezi River Bridge - Incremental launch
- Boksburg Civic Centre - Micropiles
- Ingula Pump Storage Scheme - Tunnel Support
- Durban Harbour - Heavy lifting project



Zambezi River Bridge - Incremental launch



DURASET

THE **AVENG** GROUP